



Andy Beshear  
GOVERNOR

## TRANSPORTATION CABINET

200 Mero Street  
Frankfort, Kentucky 40601

Jim Gray  
SECRETARY

April 16, 2025

CALL NO. 112  
CONTRACT ID NO. 251306  
ADDENDUM # 2

Subject: Grant County, STPS 5140 (042)  
Letting April 24, 2025

- (1) Revised - Detail Sheets - Pages 21-30 of 156
- (2) Revised - Special Note - Page 92 of 156

Proposal revisions are available at <http://transportation.ky.gov/Construction-Procurement/>.

If you have any questions, please contact us at 502-564-3500.

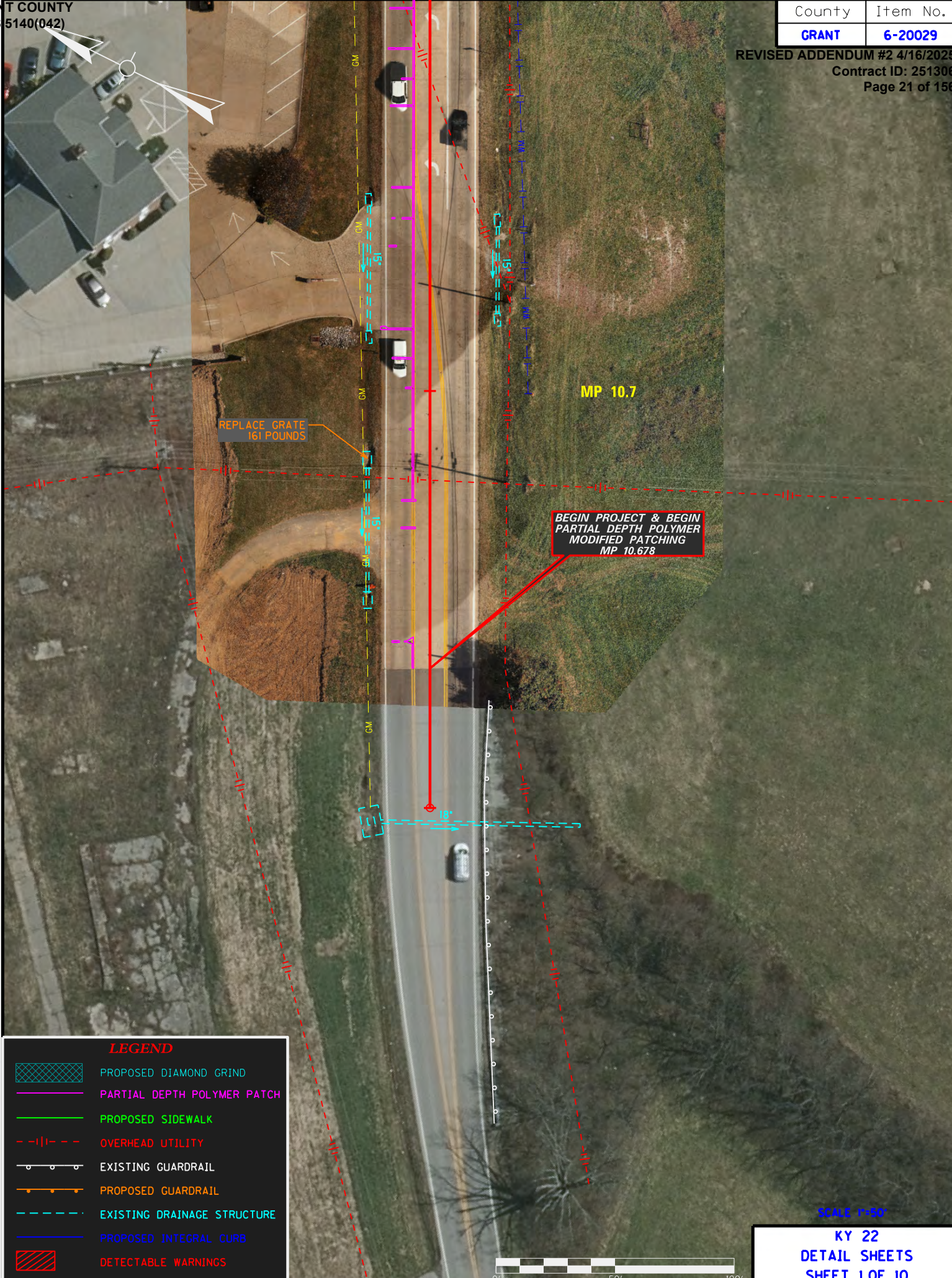
Sincerely,

A handwritten signature in black ink that reads "Rachel Mills".

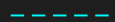
Rachel Mills, P.E.  
Director  
Division of Construction Procurement

RM:mr  
Enclosures





**LEGEND**

-  PROPOSED DIAMOND GRIND
-  PARTIAL DEPTH POLYMER PATCH
-  PROPOSED SIDEWALK
-  OVERHEAD UTILITY
-  EXISTING GUARDRAIL
-  PROPOSED GUARDRAIL
-  EXISTING DRAINAGE STRUCTURE
-  PROPOSED INTEGRAL CURB
-  DETECTABLE WARNINGS



SCALE 1"=50'  
**KY 22  
 DETAIL SHEETS  
 SHEET 1 OF 10**





SCALE 1"=50'

KY 22  
 DETAIL SHEETS  
 SHEET 2 OF 10





REMOVE AND REPLACE SIDEWALK,  
DETECTABLE WARNINGS,  
AND INTEGRAL CURB

REMOVE AND REPLACE SIDEWALK,  
DETECTABLE WARNINGS,  
AND INTEGRAL CURB

REMOVE AND REPLACE  
INTEGRAL CURB

REMOVE AND REPLACE SIDEWALK,  
DETECTABLE WARNINGS,  
AND INTEGRAL CURB

SCALE 1"=50'

KY 22  
DETAIL SHEETS  
SHEET 3 OF 10





SCALE 1"=50'

KY 22  
DETAIL SHEETS  
SHEET 4 OF 10





MP 11.1

REMOVE AND REPLACE SIDEWALK

REMOVE AND REPLACE GUARDRAIL

REMOVE AND REPLACE SIDEWALK

REMOVE AND REPLACE GUARDRAIL

REMOVE AND REPLACE SIDEWALK, DETECTABLE WARNINGS, & INTEGRAL CURB

REMOVE AND REPLACE INTEGRAL CURB

REMOVE AND REPLACE SIDEWALK, DETECTABLE WARNINGS, & INTEGRAL CURB

REMOVE AND REPLACE SIDEWALK, DETECTABLE WARNINGS, & INTEGRAL CURB

REMOVE AND REPLACE INTEGRAL CURB

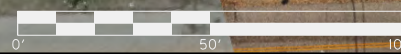
REMOVE AND REPLACE SIDEWALK, DETECTABLE WARNINGS, & INTEGRAL CURB

REMOVE AND REPLACE SIDEWALK, DETECTABLE WARNINGS, & INTEGRAL CURB

REMOVE AND REPLACE INTEGRAL CURB

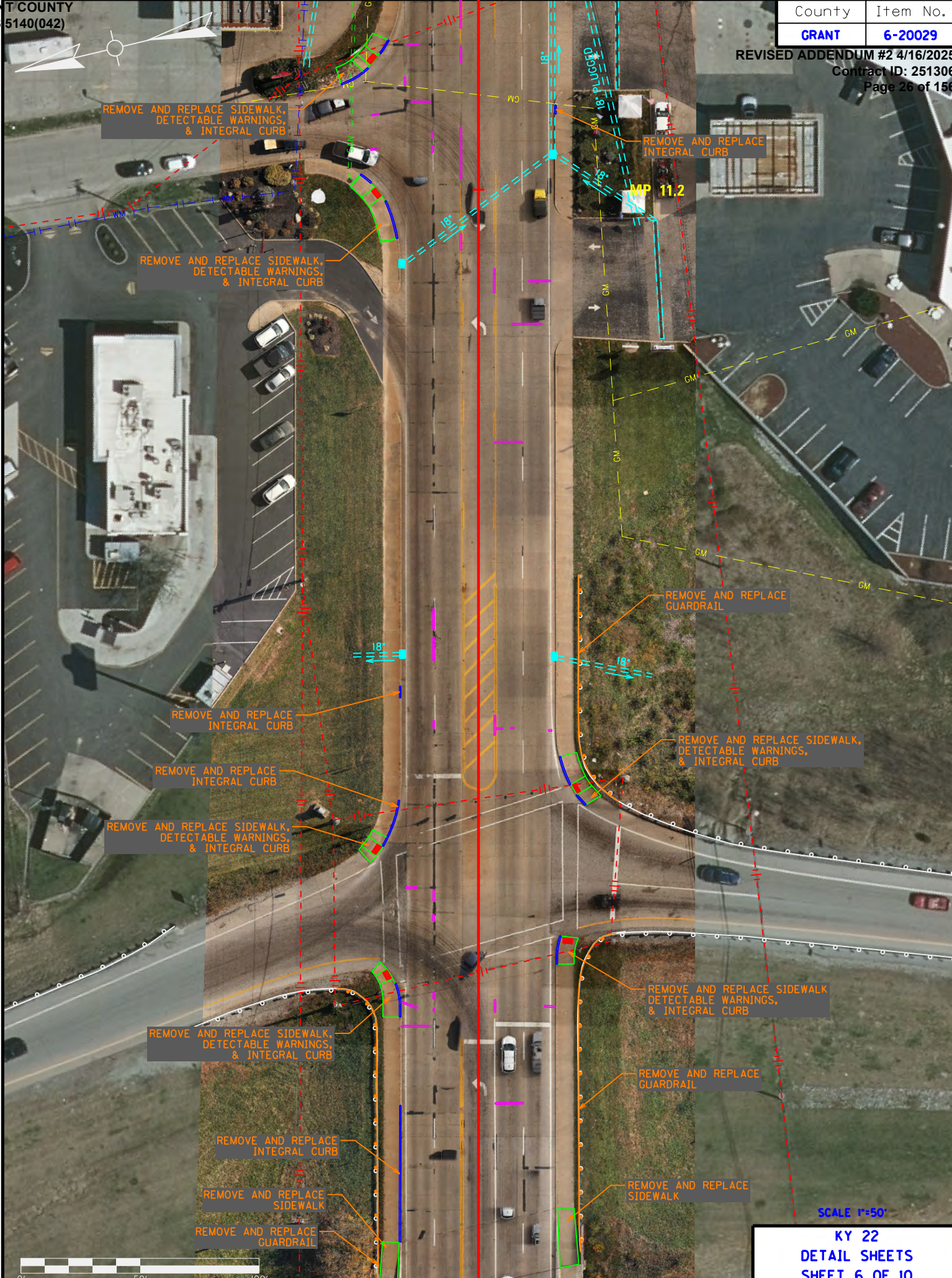
REMOVE AND REPLACE SIDEWALK, DETECTABLE WARNINGS, & INTEGRAL CURB

REMOVE AND REPLACE SIDEWALK, DETECTABLE WARNINGS, & INTEGRAL CURB



SCALE 1"=50'





SCALE 1"=50'  
KY 22  
DETAIL SHEETS  
SHEET 6 OF 10





REMOVE AND REPLACE  
INTEGRAL CURB

REMOVE AND REPLACE  
INTEGRAL CURB

REMOVE AND REPLACE  
INTEGRAL CURB

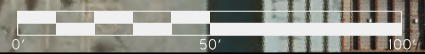
REMOVE AND REPLACE SIDEWALK,  
DETECTABLE WARNINGS,  
& INTEGRAL CURB

REMOVE AND REPLACE SIDEWALK,  
DETECTABLE WARNINGS,  
& INTEGRAL CURB

MP 11.3

END PARTIAL DEPTH  
POLYMER MODIFIED PATCHING,  
BEGIN DIAMOND GRINDING  
AND JOINT SEALING  
MP 11.262

REMOVE AND REPLACE  
INTEGRAL CURB



SCALE 1"=50'

KY 22  
DETAIL SHEETS  
SHEET 7 OF 10





REMOVE AND REPLACE INTEGRAL CURB

REMOVE AND REPLACE INTEGRAL CURB

REMOVE AND REPLACE INTEGRAL CURB

REMOVE AND REPLACE INTEGRAL CURB

REMOVE AND REPLACE INTEGRAL CURB

REMOVE AND REPLACE INTEGRAL CURB

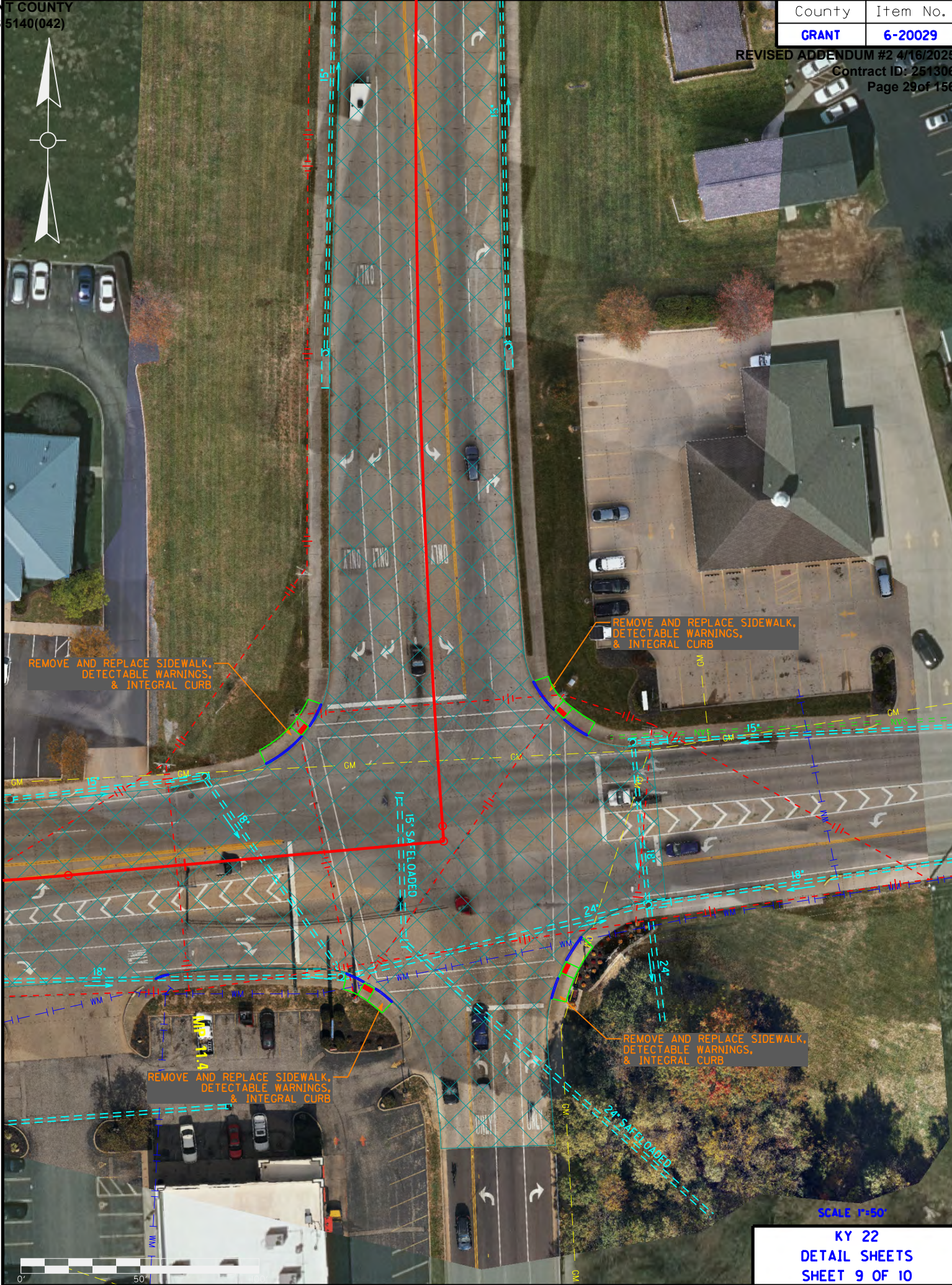
REMOVE AND REPLACE INTEGRAL CURB

SCALE 1"=50'

KY 22  
DETAIL SHEETS  
SHEET 8 OF 10







REMOVE AND REPLACE SIDEWALK,  
DETECTABLE WARNINGS,  
& INTEGRAL CURB

REMOVE AND REPLACE SIDEWALK,  
DETECTABLE WARNINGS,  
& INTEGRAL CURB

REMOVE AND REPLACE SIDEWALK,  
DETECTABLE WARNINGS,  
& INTEGRAL CURB

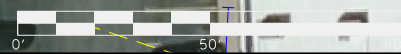
REMOVE AND REPLACE SIDEWALK,  
DETECTABLE WARNINGS,  
& INTEGRAL CURB

15' SAFETY ZONE

24' SAFETY ZONE

SCALE 1"=50'

KY 22  
DETAIL SHEETS  
SHEET 9 OF 10







END PROJECT AND  
END DIAMOND GRINDING  
AND JOINT SEALING  
MP 10.678

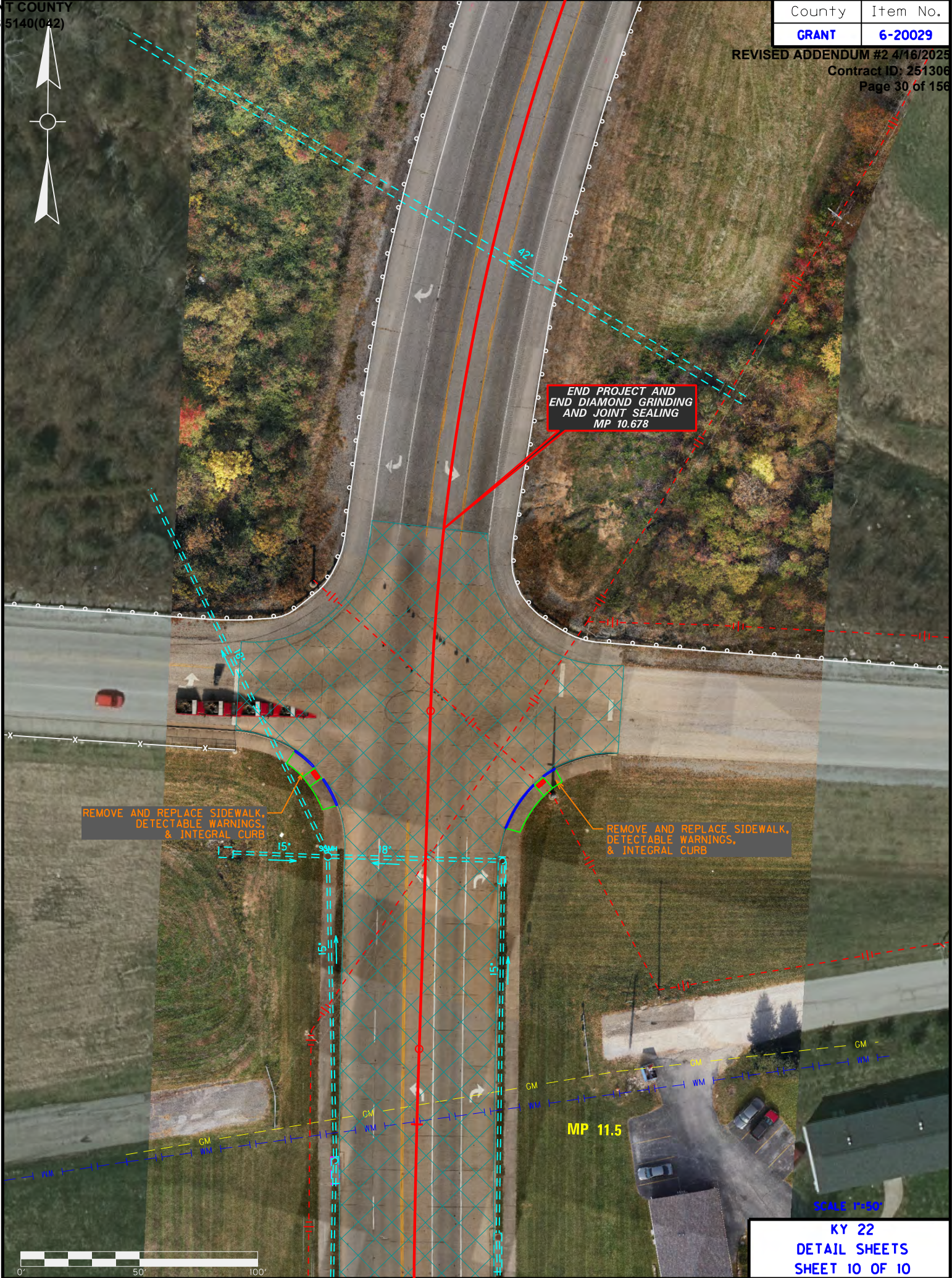
REMOVE AND REPLACE SIDEWALK,  
DETECTABLE WARNINGS,  
& INTEGRAL CURB

REMOVE AND REPLACE SIDEWALK,  
DETECTABLE WARNINGS,  
& INTEGRAL CURB

MP 11.5

SCALE 1"=50'

KY 22  
DETAIL SHEETS  
SHEET 10 OF 10





Sidewalk” has been included in the planning station quantities. Any sidewalk removal and replacement necessary to complete the construction of the Planning Station shall be constructed at 4” depth and will be measured and paid as “Remove and Replace Sidewalk”. All other sidewalk repair work that has been established in the contract will be measured and paid as “Remove Concrete Sidewalk” and “Sidewalk-4 In Concrete”.

10. Quantities of Remove Curb and Standard Integral Curb have been established to repair damaged/deteriorated segments of curb at various locations. The engineer reserves the right to modify the lengths and locations of these repairs.
11. Quantities of Remove Curb, Standard Integral Curb, Remove Sidewalk, Sidewalk-4 In Concrete, and Detectable Warnings have been included to reconstruct existing sidewalk ramps at locations designated in the plans or as directed by the engineer. Reconstruct the sidewalk landing and/or ramp and place Detectable Warnings in accordance with the Standard Drawings and remove and place new sidewalks and curbs to meet the requirements of the Standard Drawings for the ramp segment. Saw cut, full depth, at the limits of all curb and sidewalk removal areas. Unless directed otherwise, remove sidewalk to an existing contraction joint. Construct variable height curb and modify steel reinforcement length when sidewalk ramps are adjacent to the curb.
12. Complete diamond grinding in accordance with Section 503 of the specifications to the limits shown on the plans or as directed by the engineer. Complete diamond grinding across the width of all mainline and designated approach lanes, shoulders, and gutter pans as close to the existing curb as the equipment is capable. Aprons and gutter pans in the vicinity of the existing Type 13 DBI's and Curb Box Inlets are to be diamond grinded as closely to the existing curb and as necessary to ensure no ponding.
13. Saw-Clean-Reseal Joints. Existing concrete pavement joints are to be cleaned and resealed within the limits of the proposed Diamond Grinding section (MP 11.26 to MP 11.55). A quantity of Saw-Clean-Reseal Random Cracks has also been established to be used at the discretion of the engineer.
14. For informational purposes, the quantity of Connected Arrow Panels was based on the assumption that 3 arrow panels could be used on the project for a period of approximately 3 months. The contractor should base his unit bid price based on his expected number of arrow panels used and based on the duration used for each. Connected Arrow Panels will only be paid based on the number used and duration actually in use in accordance with the Special Note for Connected Arrow Panels.
15. Utility locations shown on plans/proposals are for contractor informational purposes only. These locations have been provided by outside sources and have not been field located and/or verified by the Cabinet or design consultant. Other utility types and/or locations may exist within the project limits. It is the Contractor's responsibility to have all utilities located. Any damage to utilities caused by the Contractor's actions, shall be in accordance with Section 107 and other applicable sections of the Kentucky Standard Specification for Road and Bridge Construction.